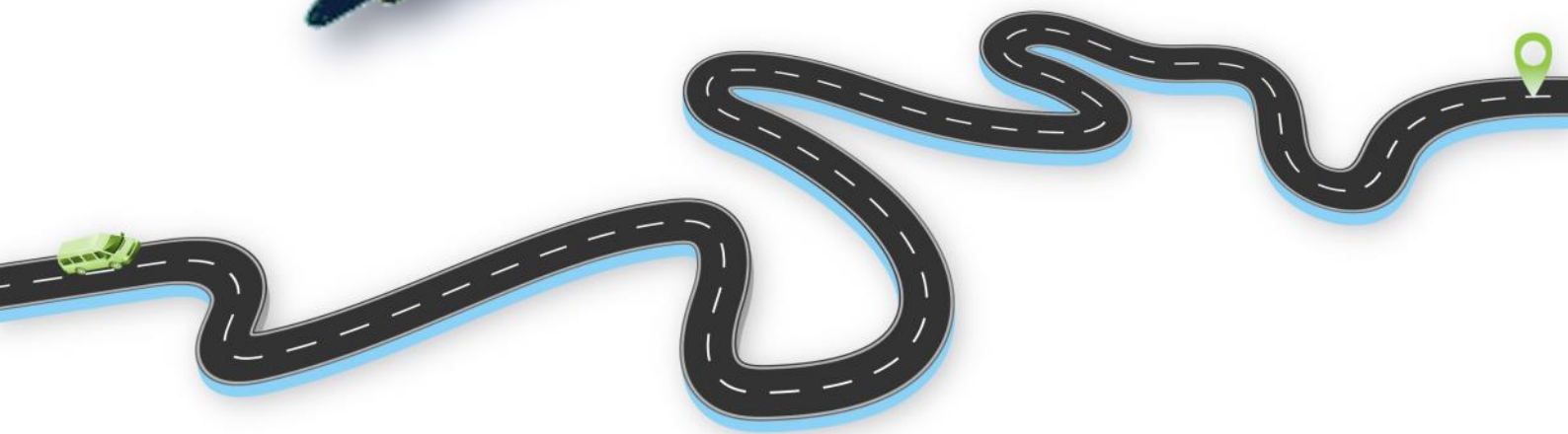




# Can I Drive a Minibus?



# Contents:



 **Introduction**

 **Basic Rules**

 **D1 Licence**

 **B Licence**

 **Lightweight Minibuses**





# Introduction

**Minibus World** is a leading **UK Manufacturer** of Minibuses. A family owned and managed second stage motor vehicle manufacturer.

We understand that owning and operating a Minibus is a significant Investment and as such it's important to know the facts about who can drive your vehicle.

We've created this document to help inform you on what is safe, and most importantly **legal in accordance with UK Road legislation.**

Whilst we strive to ensure all information contained within is accurate and up to date, we would stress we offer this as guidance only and for complete peace of mind would advise to seek professional legal advice.



**MINIBUSWORLD**  
*Escape the ordinary*



# Basic Rules:



There are some basic rules that **apply to everyone** in the UK who wants to drive a Minibus and to the vehicle it self, they are:



Have a full **valid driving licence**



Be at least **21 years old**



Held your licence for at least **2 years**



Be **insured** on the Minibus



Ensure the Minibus is **Taxed** and **MOT'd**



The Minibus must be **roadworthy**



Display your appropriate permit (Only if the Minibus is being operated under a permit scheme)





# D1 Driving Licence

If you obtained your **UK driving licence before January 1997** you will have automatically been granted a **D1** extension on your driving licence.

The D1 extension is the element that allows you to drive a Minibus with up to 16 passenger seats, weighing less than 7.5 tonne, and if **not for hire or reward**. This is known as a 101 restriction.

If you're intending to **drive the vehicle commercially** (for hire or reward) you will need to apply for the additional **Public Service Vehicle Operator Licence (PSV)** and have Minibus provisional entitlement.

It's important to note that your **D1 entitlement will expire when you reach the age of 70**. At this point you will be required to renew your car driving licence. Don't worry though the DVLA will let you know when the renewal is required.



*Escape the Ordinary!*



# B Driving Licence:



There's good news for those who passed their **UK driving licence test after 1<sup>st</sup> January 1997**. Where conditions are met, you too can drive a Minibus. We can not emphasise enough that conditions apply to this allowance and we'll highlight those for you further on.

If you passed your test after the 1<sup>st</sup> January 1997 then unfortunately, you don't automatically gain the D1 extension on your driving licence. However, if the conditions below are met, you are still able to drive a 9 – 16 passenger Minibus:

**21**

You're at least 21 years old

**2**

Held your driving licence for at least 2 years



You're driving voluntarily



Driving for social purposes



You're not charging passengers



The weight of the Minibus does not exceed 3.5 tonnes, or 4.25 tonnes if it has equipment for carrying disabled passengers, such as wheelchair ramp or lift.



You may not tow a trailer





# Lightweight Minibuses:

Why are “**Lightweight Minibuses**” in the “**Can I drive a Minibus?**” document; simple really.

Lightweight Minibuses are the industry solution to enabling those with a standard car licence (B Licence) to drive larger Minibuses.

They offer carriage for up to 16 passengers (17 including driver) and are specifically developed to meet the B Licence requirements of driving a Minibus. The Minibus “**must**” have been adapted to allow for the carriage of a wheelchair using passenger.

This may commonly include:



Having a defined area for the safe and secure carriage of a wheelchair.



Be equipped with a lift or ramp



Cant rails (Side mounted tracking)



Wheelchair clamps and restraints

**Minibus World**, as you might expect offer a range of lightweight Minibuses. We’ve dubbed these the “**CanDrive Minibus**”.



## CanDrive

*Escape the Ordinary!*





# Contact:

01782 444289

[sales@CVMWorld.co.uk](mailto:sales@CVMWorld.co.uk)

[www.minibus-online.co.uk](http://www.minibus-online.co.uk)

